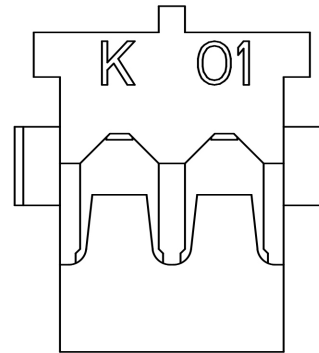
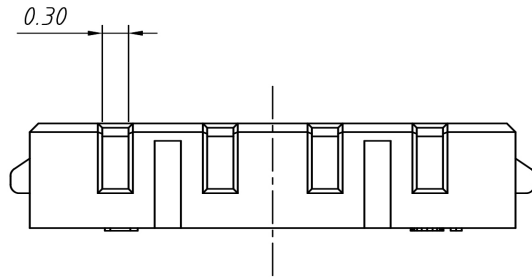


RoHS Compliance



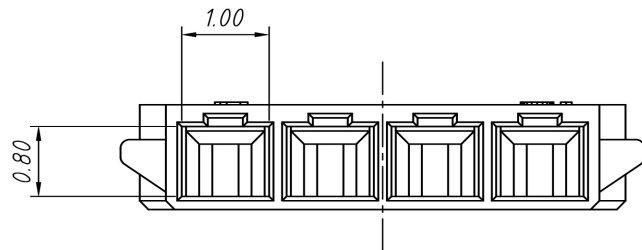
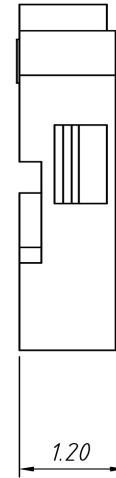
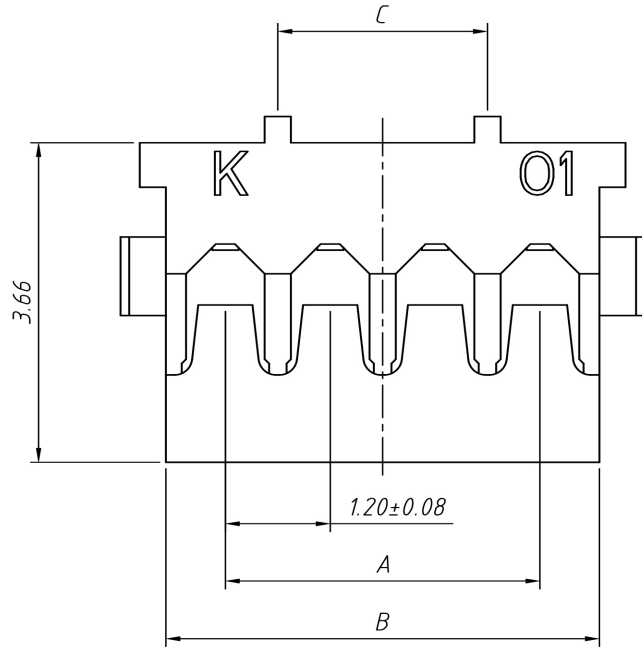
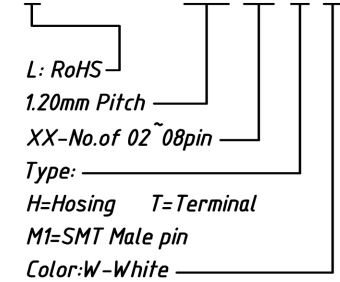
2 P

**Material:**  
Housing: Nylon46 ,UL94V-0  
Colour: White

**Electrical Characteristics:**  
Current rating: 1.5A AC,DC  
Voltage rating: 50V AC,DC  
Temperature range: -25°C ~ + 85°C  
Insulation resistance: 100MΩ/Min.  
Withstanding voltage: 500V AC/minute  
Contact resistance: 20mΩ/Max.

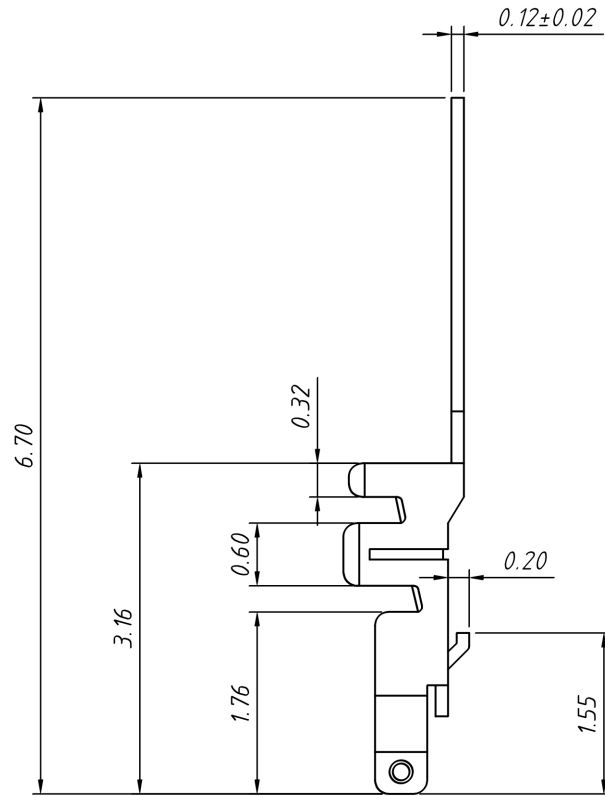
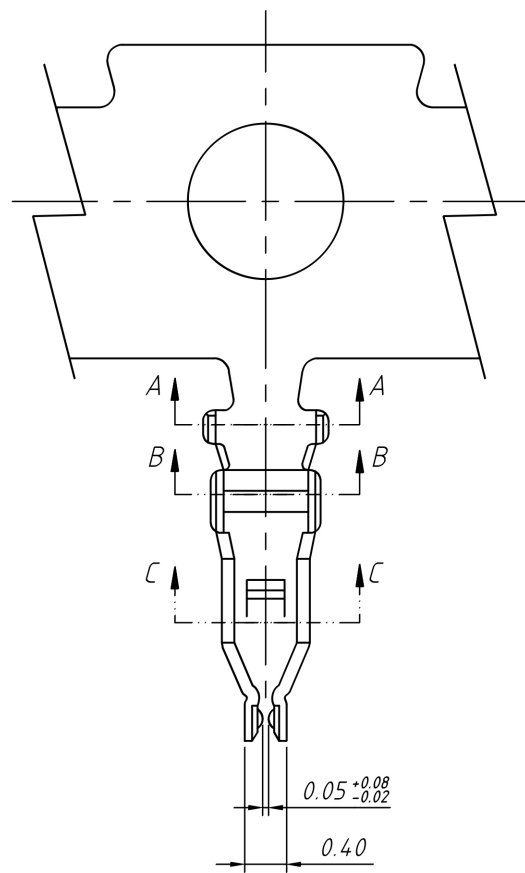
**Order Information:**

L-ETC1-XL2-1.20-XX-H-W



PIN.	Dimensions(mm)		
	A	B	C
02	1.20	2.60	---
03	2.40	3.80	1.20
04	3.60	5.00	2.40
05	4.80	6.20	3.60
06	6.00	7.40	4.80
07	7.20	8.60	6.00
08	8.40	9.80	7.20

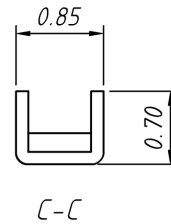
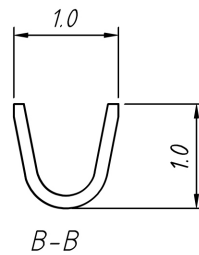
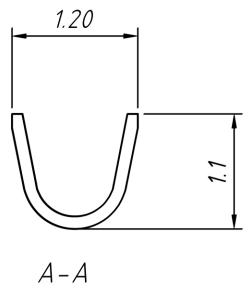
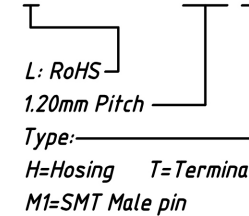
ANGLE TOLERANCE	PROJECTION	Description:
±3°		1.20mm Pitch JST ACH wire to board connector
GENERAL TOLERANCE	UNITS	mm
x.x ±0.30	SHEET SIZE	A4
x.xx ±0.20	Draw:	Daniel 2020-11-11
x.xxx ±0.10	Check:	Daniel 2020-11-11
		ETC P/N: L-ETC1-XL2-1.20-XX-H-W
		ETC ELECTRONICS CO., LTD.



**Material:**  
 Terminal: Phosphor Bronze  
 Finish: Gold-flash over Nickel  
 Applicable Wires: AWG#30 ~ #28  
 Insulation O.D. : 0.70mm MAX

**Electrical Characteristics:**  
 Current rating: 1.5A AC, DC  
 Voltage rating: 50V AC, DC  
 Temperature range: -25°C ~ +85°C  
 Insulation resistance: 100MΩ/Min.  
 Withstanding voltage: 500V AC/minute  
 Contact resistance: 20mΩ/Max.

**Order Information:**  
 L-ETC1-XL2-1.20-T

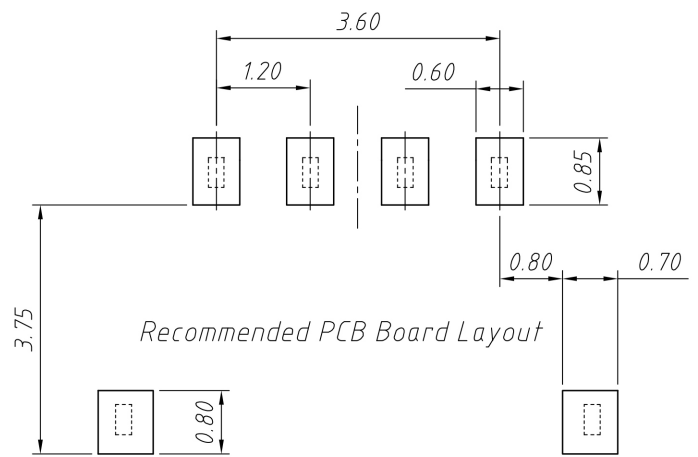
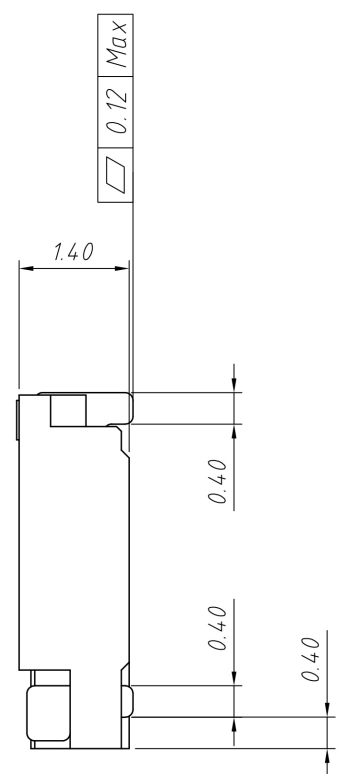
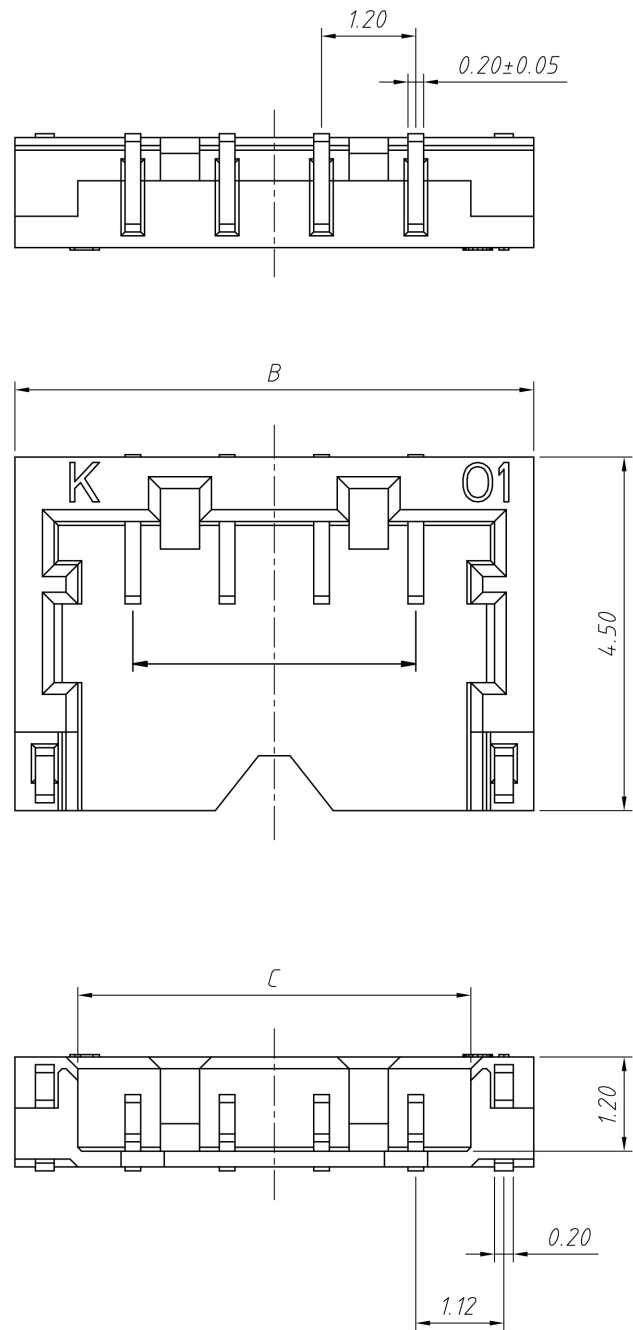


ANGLE TOLERANCE	PROJECTION	Description:
±3°		1.20mm Pitch Wire to board connector, Terminal
GENERAL TOLERANCE	UNITS	mm
x.x ±0.30	SHEET SIZE	A4
x.xx ±0.20	Draw:	Daniel 2020-11-11
x.xxx ±0.10	Check:	Daniel 2020-11-11



ETC ELECTRONICS CO., LTD.

RoHS Compliance



Recommended PCB Board Layout

**Material:**  
 Insulator: PA9T, UL 94V-0, Black  
 Contact: Phosphor bronze, Gold Flash plated  
 Fitting Nail: Brass, Tin plated  
**Electrical Characteristics:**  
 Current rating: 15A AC, DC  
 Voltage rating: 50V AC, DC  
 Temperature range: -25°C ~ +85°C  
 Insulation resistance: 100MΩ/Min.  
 Withstanding voltage: 500V AC/minute  
 Contact resistance: 20mΩ/Max.

**Order Information:**  
 L-ETC1-XL2-1.20-XX-M1-W  
 L: RoHS  
 1.20mm Pitch  
 XX-No. of 02~08pin  
 Type: M1=SMT Male pin  
 H=Hosing T=Terminal  
 Color: W=White

PIN.	Dimensions(mm)		
	A	B	C
02	1.20	4.30	2.64
03	2.40	5.50	3.84
04	3.60	6.70	5.04
05	4.80	7.90	6.24
06	6.00	9.10	7.44
07	7.20	10.30	8.64
08	8.40	11.50	9.84

ANGLE TOLERANCE	PROJECTION	Description:		
±3°		1.20mm Pitch JST ACH wire to board connector		
GENERAL TOLERANCE	UNITS	mm	ETC P/N:	L-ETC1-XL2-1.20-XX-M1-W
x.x ±0.30	SHEET SIZE	A4		
x.xx ±0.20	Draw:	Daniel	2020-11-11	
x.xxx ±0.10	Check:	Daniel	2020-11-11	