

Switch

Push Button Switch Series

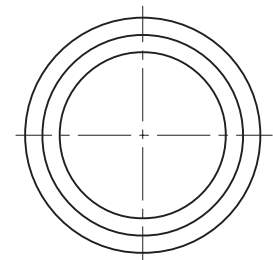
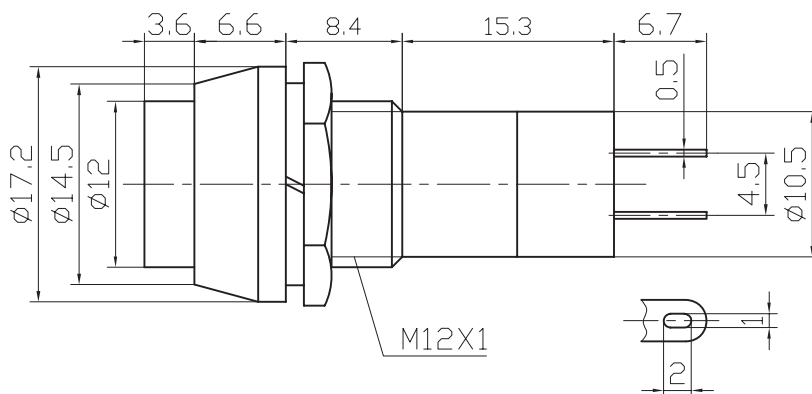
ETC7-PBS-006 Push Button Switch Series

ELECTRICAL

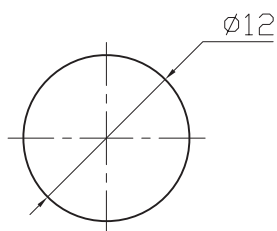
Rating: 3A 125V AC ,1A 250V AC
Contact resistance: 20m Ω Max
Insulation resistance: 100M Ω /500VDC Min
Withstanding Voltage: AC1000V/1Min
Operating Temperature: -25°C~+85°C
Electrical life: 50000 Cycles



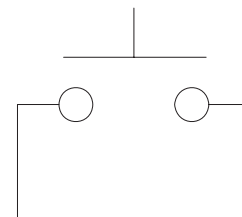
VII



Mounting



Circuitry



ON-OFF

ORDER INFORMATION

ETC7-PBS-006 X X	
Part Number	Button color: R=Red G=Green B=Black
PBS-006: Push Button Switch Series	Function: B=ON-OFF C=ON-(OFF) D=OFF-(ON)