

Switch

DIP Switch Series

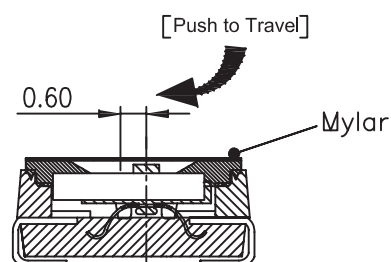
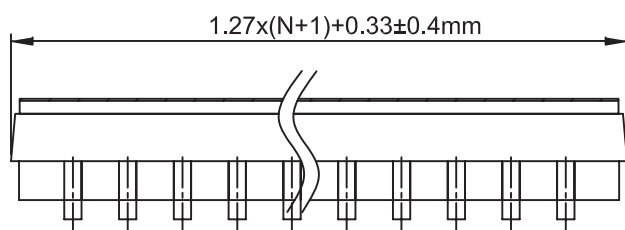
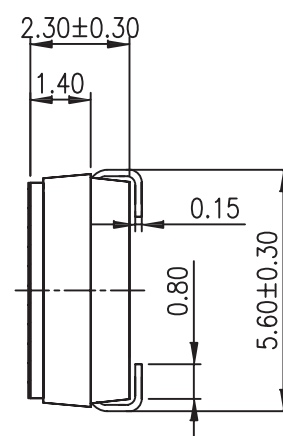
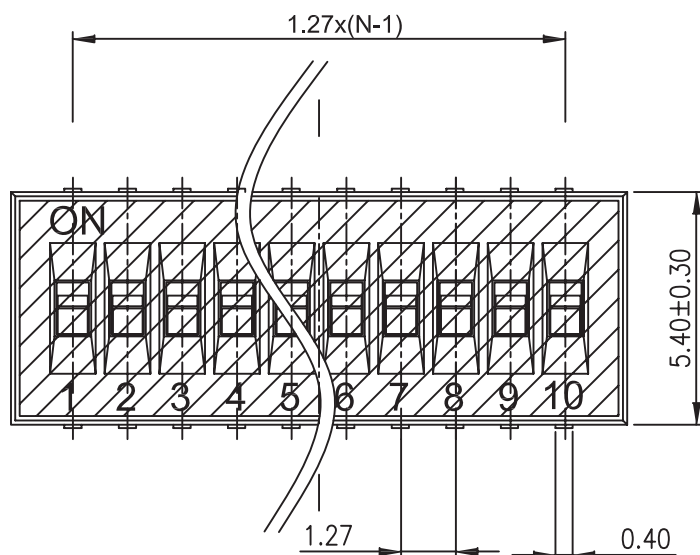
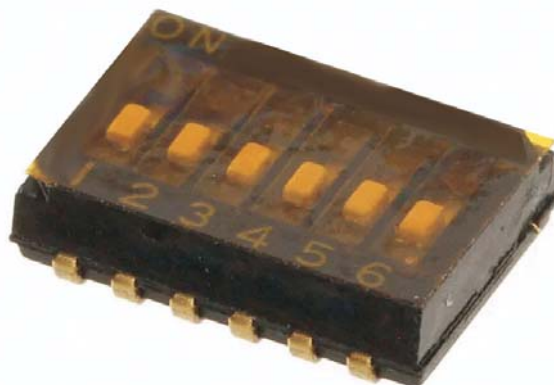
ETC7-KPH 1.27mm Half Pitch DIP Switch Series

Specifications

Contact Rating:	25 mA at 24VDC (switching) 100 mA at 50VDC (steady state)
Life:	1,000 cycles
Contact Resistance:	100mΩ Max.
Insulation Resistance:	100MΩ at 100VDC Min
Dielectric Strength:	300VAC Min
Storage Temperature:	-40°C ~ 85°C
Operating Temperature:	-40°C to 85°C
Operation Force:	9.8N Max.

Materials

Base & Cover:	PPS (UL94V-0)
Actuator:	PA46 (UL94V-0).
Contacts:	Brass, Gold / Tin Plate
Terminals:	Brass, Gold / Tin Plate
Mylar:	0.05mm UL94V-0 Mylar



ORDER INFORMATION

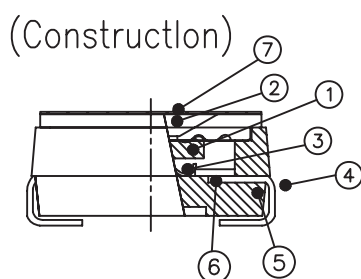
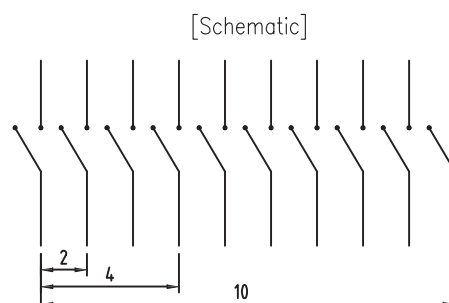
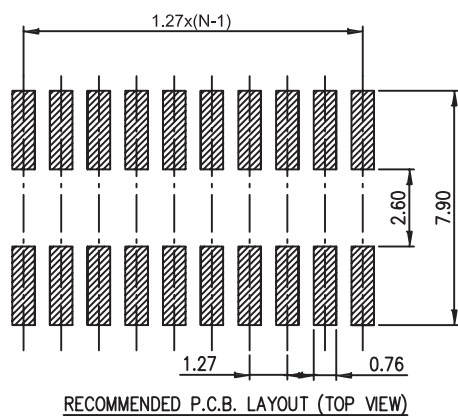
ETC7-KPH-XX-N-10

Part Number	ETC7-KPH-XX-N-10	Packaging: 0=Tube 1=Tape
KPH: 1.27mm Half Pitch Dip Switch		1: With sealed
Number of Pos.: 02~10 Pos.		Color: N=Black

Switch

DIP Switch Series

ETC7-KPH 1.27mm Half Pitch DIP Switch Series



Number	Part Name	Material	Finished
①	Actuator	UL94 V0	White
②	Cover	UL94 V0	Black
③	Movable	Beryllium Copper	3 μ ' Gold
④	Terminal	Brass	1 μ ' Gold
⑤	Base	UL94 V0	Black
⑥	Terminal Contact	Brass	3 μ ' Gold
⑦	Mylar	UL94 V0	0.05mm

ORDER INFORMATION

ETC7-KPH-XX-N-10

Part Number _____
KPH: 1.27mm Half Pitch _____
Dip Switch _____
Number of Pos.: 02~10 Pos. _____
Packaging: 0=Tube 1=Tape
1: With sealed
Color: N=Black